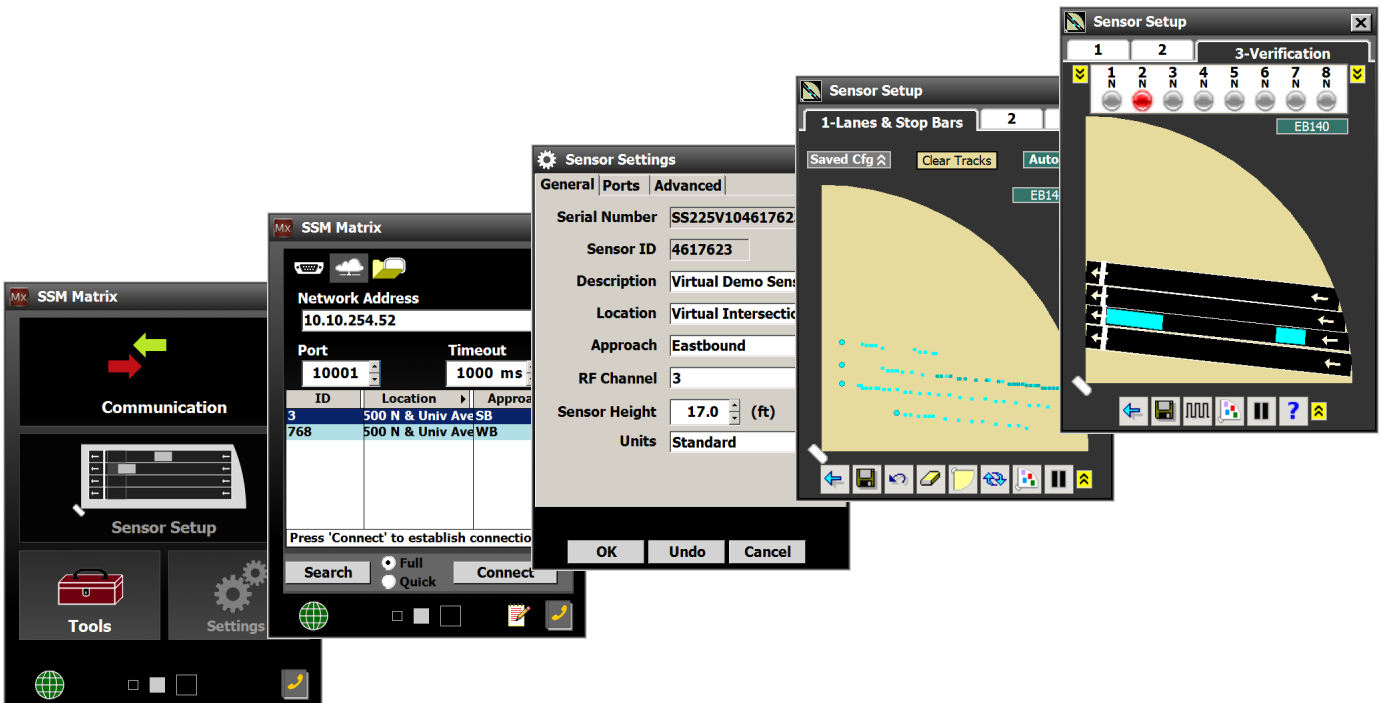


SmartSensor Manager Matrix

SmartSensor™ Manager Matrix is a software program that provides real-time two-dimensional traffic visualization, auto-configuration support and click-and-drag functionality for quick and easy sensor setup and verification.

Features

- Configuration utility for SmartSensor Matrix that provides complete access to sensor settings
- Operates on Windows® Mobile, XP, Vista, 7 and 8
- Features real-time visual representations of detected traffic
- User-intuitive and user-friendly software structure is easy to navigate
- Click-and-drag-based operation
- Virtual mode available for training and educational applications
- Detects up to 10 lanes of traffic simultaneously
- Free upgrades to the newest version of the software
- Enables you to remotely upgrade the firmware of your SmartSensor
- Allows you to back up and restore sensor settings





Technical Specifications

Software Functionality

- Configuration for SmartSensor Matrix that provides complete access to sensor settings
- Graphical user interface with traffic pattern display for traffic monitoring and sensor verification
- Displays all configured alerts and provides visual representation of their actuation
- Provides a means of logging the vehicular track files with an update rate of greater than 5 times per second
- Connectivity functionality:
 - Auto-detect serial port
 - TCP/IP connectivity
 - Virtual connectivity for software use without a sensor
- Sensor configuration back-up and restore
- Automatic and manual lane configuration
- User-selectable English or metric units

Software Properties

- Supported operating systems:
 - Windows Mobile v5.0 or greater (Socket Mobile 650-M)
 - Windows XP
 - Windows Vista
 - Windows 7
 - Windows 8

Available Documentation

- User quick-reference guide
- Comprehensive user guide
- Instructional training guide

Ordering Information

SmartSensor Manager Matrix
550-0004

Wavetronix

78 East 1700 South
Provo, UT 84606
801.734.7200
sales@wavetronix.com
www.wavetronix.com